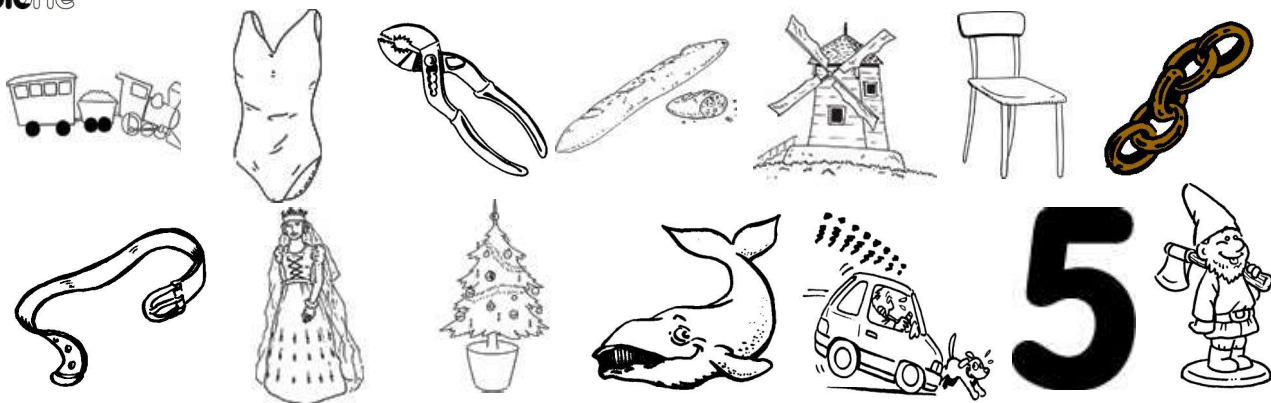
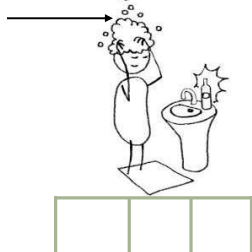
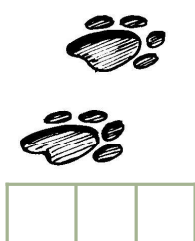
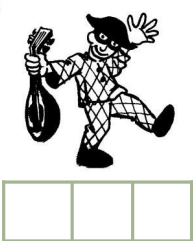


1 Colorie le dessin si tu entends « in »

colorie



2 Coche la case quand tu entends « in »



3 Ecris les mots correspondant aux dessins.

J'écris 

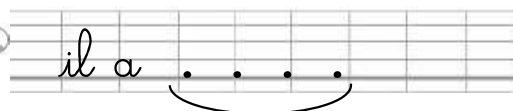
• ain



• ein



• aim



4



Colorie en rouge quand tu vois

**ain ain**

en bleu **ein ein**





en vert **aim aim**

- Sylvain - empreinte - train - pain - daim - peintre
- Le poulain et le daim ont faim de pain !

5



colle les étiquettes des mots dans la colonne adéquate.

 ain ein aim  in	 ain ein aim <del></del> in

6



Colorie les syllabes selon le code couleur.

pain
hein
daim
main
fein
faim

rain	hein	daim	hein	hein	daim	hein	rain
main	rain	faim	faim	faim	faim	rain	main
main	faim	rain	fein	fein	rain	faim	main
main	fein	faim	hein	hein	faim	fein	main
fein	daim	hein	daim	daim	hein	daim	fein

